

## How to install and start up applications

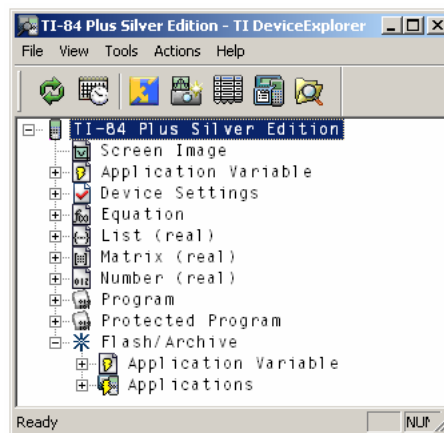
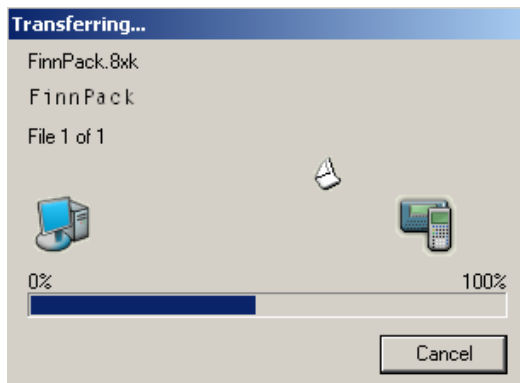
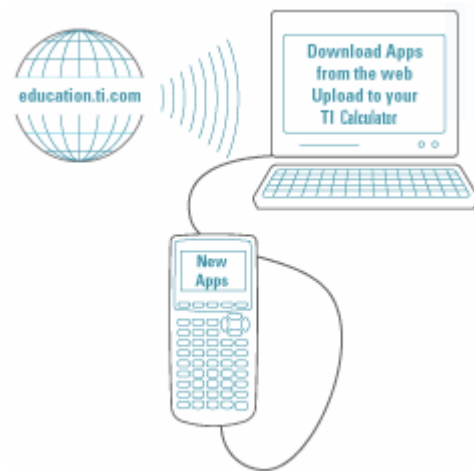
Before you can install applications on your TI-84 Plus Silver Edition be sure the software TI Connect is installed on your computer. If not, you can download it for free from the TI website: [www.education.ti.com](http://www.education.ti.com) → Downloads.

It's also a good idea to check first if you have the latest Operating System installed on your calculator. To check which OS is on your calculator press  $2^{nd}$ [MEM] and select 1:About. You will find the latest OS via the website mentioned above and the installation of a new OS works the same as the installation of an application, see further.

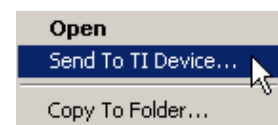
Be sure your calculator is physically connected to your computer with a TI-GRAPH LINK™ cable or a USB Cable.

Now you are ready to install an application.

- A. At [www.education.ti.com](http://www.education.ti.com), go to the page to download APPS and download for free the desired APP to your computer.
- B. Browse for the location of the downloaded APP file.
  - For Windows users drag and drop the APP file onto the TI Connect icon. It is also possible to open the TI DeviceExplorer of TI connect and drag and drop the APP file into this window.

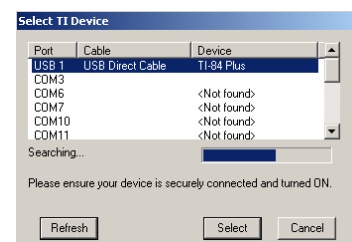


A third possibility is to right click on the APP file and choose Send to TI Device ... From there just do what the wizards will ask you to do.



- For Mac OS X users launch the TI Device Explorer of TI Connect and drag and drop the APP file into the device window.

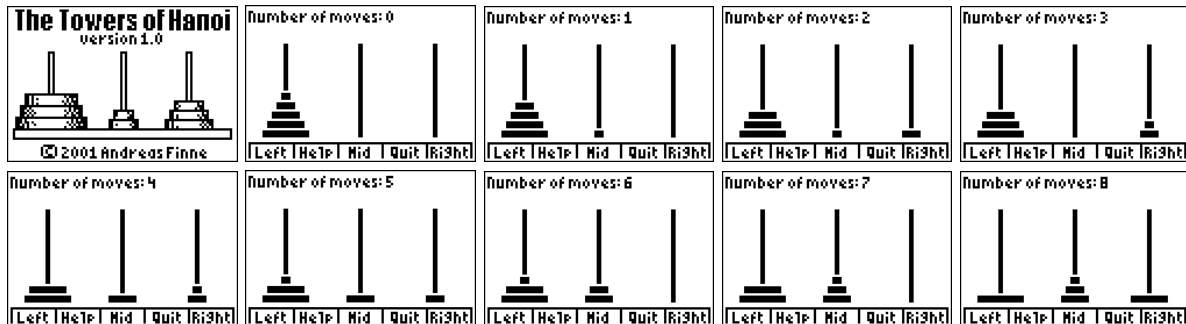
The APP will be installed automatically into the Archive memory. Sometimes you need to select (e.g. when you switch calculators) the calculator before an APPS transfer can start.



Once an APP is installed on the calculator you can use it by pressing the APPS button, selecting the APP and pressing ENTER.



Some screen captures of The Towers of Hanoi.



How many applications you can install on your calculator depends on which calculator you have and which APPS you want to install.

The Archive memory, in which the APPS are installed, of the TI-83 Plus, TI-84 Plus or TI-84 Plus Silver Edition calculator is divided into slots into which you can load APPS. Some APPS take up only one slot and other APPS can take up to four. A summary:

Graphing Calculator	Flash ROM	Applications (±)
TI-83 Plus	160 KB	10
TI-84 Plus	480 KB	30
TI-84 Plus Silver Edition	1.5 MB	94