

## Companion software

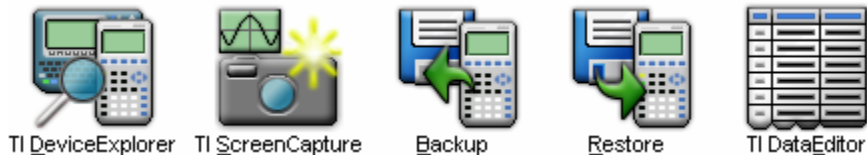
### TI Connect™

Free



TI Connect is the link software, which makes the connectivity between the TI-83/84 Plus (and other TI graphing calculators) and computer quick and easy: downloading and transferring data, OS updates, installation of applications (APPS).

The most important tools included in TI Connect are:



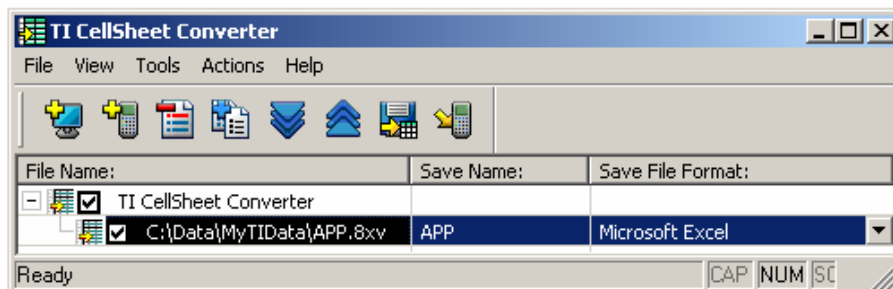
### TI CellSheet™ Converter

Free



The TI CellSheet Converter provides the ability to convert spreadsheet files from one format to another. Supported file formats are the CellSheet APP, Microsoft® Excel, AppleWorks® and tab-delimited text.

You can also use the TI CellSheet Converter to convert spreadsheets from one TI device format into another device format (e.g. TI-84 Plus into Voyage™ 200).



TI Connect must be installed prior to installing the TI CellSheet Converter software for the TI CellSheet Converter software to operate properly.

### TI StudyCards™ Creator

Free



TI StudyCards is the software teachers and students can use to create stacks of electronic flash cards that can be viewed on a TI graphing calculators using the StudyCards APP. Cards can contain text and images. You can create stacks for use in any subject and for each class!

Afterwards you can transfer the stacks of cards from computer to the calculator using the TI StudyCards Creator or TI Connect.

An example of a stack of 14 cards:

Card: 7 of 14

Name of Card: Doubletrouble

Front of Card Screen 1 of 2

Back of Card Screen 1 of 1

\* Down arrow to choices \*  
What is the domain of the function

$$f(x) = \frac{4}{\sqrt{x-2}}$$

Number of choices: 4  
The correct answer is: 3

1: Study of Functions  
2: Vertical line test  
3: Zero denominators  
4: Finding range  
5: Domain Square Rt.  
6: Absolute value  
7: Doubletrouble  
8: Odd/Even  
9: Addition  
10: Composition  
11: Split definitions  
12: Inverse reflect  
13: Even  
14: Substitution

This function has two problems - possible zero denominator AND workable square root values. The values  $x \geq 2$  will satisfy the square root, but  $x=2$  will cause a zero denominator.

## TI-SmartView™ Purchase

**Purchase**



TI-SmartView™ software gives you a TI-84 Plus calculator, full functionality including applications, on your computer. This emulator of the TI-84 Plus (Silver Edition) is an easy-to-use demonstration tool that offers many unique instructional capabilities. It is possible to include, only by drag and drop, screens from TI-SmartView in teaching material.

### SOME FEATURES

#### Key Press History

As keys are selected key images can be projected to the class. These keys can also be copied to teaching materials.



#### Scripts

Teachers can prerecord their own key press history into scripts for playback in class. It is easy to create, edit, play, pause and modify speed.

#### CBL 2™ / CBR 2™

You can use the TI-SmartView, connected to a CBL 2 or CBR 2, to collect real world data.

#### View3™ Feature

Teachers can simultaneously project up to three representations of graph, table, equation, list and stat plot window, together with a large version of the current calculator screen.

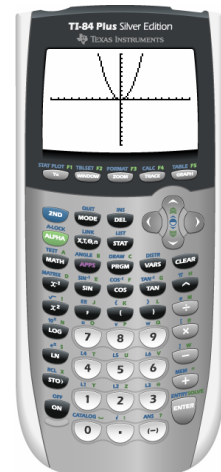
#### Screen Capture

It's easy to create and save multiple screen captures.

#### SmartPad Application

The combination of TI-SmartView 2.0 and the SmartPad APP allows you to use your TI-84 Plus (Silver Edition) as a remote input device.

**TI-SmartView is only available for educators.**



P1ot2 P1ot3

```

Y1 X^2
Y2 =
Y3 =
Y4 =
Y5 =
Y6 =
Y7 =
    
```

Equation

X	Y1
0	0
1	1
4	16
9	81
16	256
25	625

X=0

Table

```

WINDOW
Xmin=-10
Xmax=10
Xscl=1
Ymin=-10
Ymax=10
Yscl=1
Xres=1
    
```

Window